

Product Information

DMT-dG(dmf) phosphoramidite

Cat. No.: X24-03-LY089

Size: 1 g; 5 g; 10 g; 25 g; 100 g; 1 kg

MDL: MFCD00797420

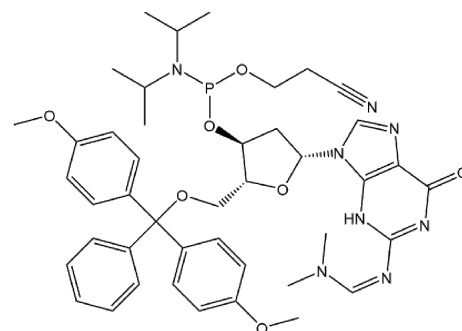
CAS Number: 330628-04-1

PubChem CID: 136334904

Synonym: 330628-04-1; *N*'-[9-[(2*R*, 4*S*, 5*R*

)-5-[[Bis(4-methoxyphenyl)-phenylmethoxy]methyl]-4-[2-cyanoethoxy-[di(propan-2-yl)amino]phosphanyl]oxyoxolan-2-yl]-6-oxo-1*H*-purin-2-yl]-*N*, *N*-dimethylmethanimidamide

This product is for research use only and is not intended for diagnostic use.



Product Information

Description	DMT-dG(dmf) phosphoramidite is a synthetic organic compound.
Molecular Weight	824.90
Molecular Formula	C ₄₃ H ₅₃ N ₈ O ₇ P
IUPAC Name	<i>N</i> '-[9-[(2 <i>R</i> , 4 <i>S</i> , 5 <i>R</i>)-5-[[Bis(4-methoxyphenyl)-phenylmethoxy]methyl]-4-[2-cyanoethoxy-[di(propan-2-yl)amino]phosphanyl]oxyoxolan-2-yl]-6-oxo-1 <i>H</i> -purin-2-yl]- <i>N</i> , <i>N</i> -dimethylmethanimidamide
InChI	InChI=1S/C43H53N8O7P/c1-29(2)51(30(3)4)59(56-24-12-23-44)58-36-25-38(50-28-45-39-40(50)47-42(48-41(39)52)46-27-49(5)6)57-37(36)26-55-43(31-13-10-9-11-14-31, 32-15-19-34(53-7)20-16-32)33-17-21-35(54-8)22-18-33/h9-11, 13-22, 27-30, 36-38H, 12, 24-26H2, 1-8H3, (H, 47, 48, 52)/b46-27+/t36-, 37+, 38+, 59?/m0/s1
InChI Key	YRQAXTCBMPFGAN-UNHDIWNRSA-N
Canonical SMILES	CC(C)N(C(C)C)P(OCCC#N)OC1CC(OC1COC(C2=CC=CC=C2)(C3=CC=C(C=C3)OC)C4=CC=C(C=C4)OC)N5C=NC6=C5N=C(NC6=O)N=CN(C)C
Isomeric SMILES	CC(C)N(C(C)C)P(OCCC#N)O[C@@H]1C[C@@H](O[C@@H]1COC(C2=CC=CC=C2)(C3=CC=C(C=C3)OC)C4=CC=C(C=C4)OC)N5C=NC6=C5N=C(NC6=O)/N=C/N(C)C
Form	White to off-white solid
Purity	≥98%
Applications	DMT-dG(dmf) phosphoramidite can be used as a precursor for anticancer drugs or as an



intermediate for synthesizing drugs for the treatment of hepatitis B virus.

Storage	Store at -20°C.
----------------	-----------------

Safety Information

Personal Protective Equipment	Gloves, eyeshields, N95 mask
--------------------------------------	------------------------------

Hazard Statements	H302-H315-H319-H335
--------------------------	---------------------
