

## Product Information

### SCH 442416

**Cat. No.:** X23-12-YM690

**Size:** 10 mg; 25 mg; 50 mg; 100 mg

**CAS Number:** 316173-57-6

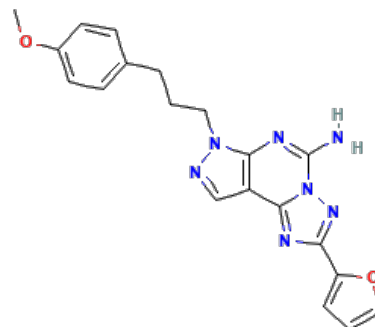
**Compound CID:** 10668061

**Synonym:** 316173-57-6;

2-(Furan-2-yl)-7-(3-(4-methoxyphenyl)

propyl)-7H-pyrazolo[4,3-e][1,2,4]triazolo[1,5-c]pyrimidin-5-amine

**This product is for research use only and is not intended for diagnostic use.**



#### Product Information

<b>Description</b>	SCH 442416, soluble in DMSO and insoluble in water and ethanol, inhibits the signaling pathway between G-protein-coupled receptors (GPCRs) and G proteins.
<b>Molecular Weight</b>	389.42
<b>Molecular Formula</b>	C <sub>20</sub> H <sub>19</sub> N <sub>7</sub> O <sub>2</sub>
<b>IUPAC Name</b>	4-(Furan-2-yl)-10-[3-(4-methoxyphenyl)propyl]-3,5,6,8,10,11-hexazatricyclo[7.3.0.0 <sup>2,6</sup> ]dodeca-1(9),2,4,7,11-pentaen-7-amine
<b>InChI</b>	InChI=1S/C20H19N7O2/c1-28-14-8-6-13(7-9-14)4-2-10-26-18-15(12-22-26)19-23-17(16-5-3-11-29-16)25-27(19)20(21)24-18/h3,5-9,11-12H,2,4,10H2,1H3,(H2,21,24)
<b>InChI Key</b>	AEULVFLPCJOBCE-UHFFFAOYSA-N
<b>Canonical SMILES</b>	COC1=CC=C(C=C1)CCCN2C3=C(C=N2)C4=NC(=NN4C(=N3)N)C5=CC=CO5
<b>Form</b>	Lyophilized powder
<b>Purity</b>	>98%
<b>Solubility</b>	DMSO: 72 mg/mL (184.89 mM); Water: insoluble; Ethanol: insoluble
<b>Stability</b>	The product is stable for three years when stored at the recommended temperature in lyophilized powder.
<b>Applications</b>	SCH 442416 can be used to research and develop therapeutic strategies for certain diseases that involve excessive activation of GPCR-G protein signaling pathways.
<b>Storage</b>	Store at -20°C, and keep desiccated.