



Product Information

JWH 249

Cat. No.: X23-12-YM870

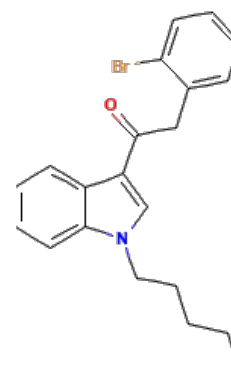
Size: 10 mg; 25 mg; 50 mg; 100 mg

CAS Number: 864445-60-3

Compound CID: 44397335

Synonym: 864445-60-3; 2-(2-Bromophenyl)-1-(1-pentyl-1*H*-indol-3-yl)ethanone

This product is for research use only and is not intended for diagnostic use.



Product Information

Description	JWH 249 inhibits the signaling pathway between G-protein-coupled receptors (GPCRs) and G proteins.
Molecular Weight	384.3
Molecular Formula	C ₂₁ H ₂₂ BrNO
IUPAC Name	2-(2-Bromophenyl)-1-(1-pentylindol-3-yl)ethanone
InChI	InChI=1S/C21H22BrNO/c1-2-3-8-13-23-15-18(17-10-5-7-12-20(17)23)21(24)14-16-9-4-6-11-19(16)22/h4-7,9-12,15H,2-3,8,13-14H2,1H3
InChI Key	CGQRVOHECAULLB-UHFFFAOYSA-N
Canonical SMILES	CCCCCN1C=C(C2=CC=CC=C21)C(=O)CC3=CC=CC=C3Br
Form	Lyophilized powder
Purity	>98%
Stability	The product is stable for three years when stored at the recommended temperature in lyophilized powder.
Applications	JWH 249 can be used for research on neuropathic pain, chronic pain conditions, and inflammatory pain.
Storage	Store at -20°C, and keep desiccated.