

Product Information

Tasimelteon

Cat. No.: X23-12-YM1074

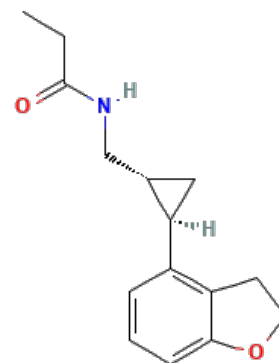
Size: 5 mg; 10 mg; 50 mg; 100 mg

CAS Number: 609799-22-6

Compound CID: 10220503

Synonym: 609799-22-6; VEC-162

This product is for research use only and is not intended for diagnostic use.



Product Information

Description	Tasimelteon, soluble in DMSO, inhibits the signaling pathway between G-protein-coupled receptors (GPCRs) and G proteins.
Molecular Weight	245.32
Molecular Formula	C ₁₅ H ₁₉ NO ₂
IUPAC Name	<i>N</i> -[[[(1 <i>R</i> ,2 <i>R</i>)-2-(2,3-Dihydro-1-benzofuran-4-yl)cyclopropyl]methyl]propanamide
InChI	InChI=1S/C15H19NO2/c1-2-15(17)16-9-10-8-13(10)11-4-3-5-14-12(11)6-7-18-14/h3-5,10,13H,2,6-9H2,1H3,(H,16,17)/t10-,13+/m0/s1
InChI Key	PTOIAAWZLUQTIO-GXFFZTMASA-N
Canonical SMILES	CCC(=O)NCC1CC1C2=C3CCOC3=CC=C2
Isomeric SMILES	CCC(=O)NC[C@@H]1C[C@H]1C2=C3CCOC3=CC=C2
Form	Lyophilized powder
Purity	>98%
Solubility	DMSO: 44 mg/mL (179.35 mM)
Stability	The product is stable for three years when stored at the recommended temperature in lyophilized powder.
Applications	Tasimelteon can be used for its ability to mimic the effects of melatonin, helping to regulate the sleep-wake cycle and improve nighttime sleep and daytime wakefulness in affected individuals.
Storage	Store at -20°C, and keep desiccated.