

## Product Information

### PI3K inhibitor Wortmannin, Purity ≥98%

**Cat. No.:** X24-05-ZQ173

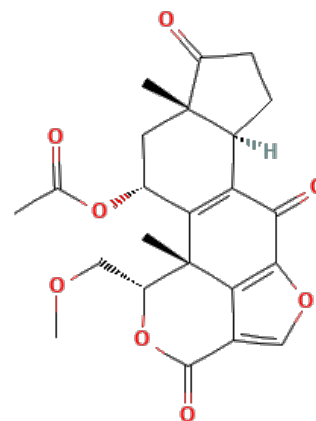
**Size:** 5 mg; 10 mg; 25 mg; 50 mg

**CAS Number:** 19545-26-7

**Compound CID:** 312145

**Synonym:** 19545-26-7; SL-2052; PI3K inhibitor

**This product is for research use only and is not intended for diagnostic use.**



#### Product Information

<b>Description</b>	Wortmannin, soluble in DMSO and insoluble in ethanol and water, is a potent compound that inhibits PI3 kinase activity. It targets ATM [12], ATR [12], DNA-PK [12], MLCK, and PI3K.
<b>Molecular Weight</b>	428.43
<b>Molecular Formula</b>	C <sub>23</sub> H <sub>24</sub> O <sub>8</sub>
<b>Targets</b>	ATM [12]: 150 nM; ATR [12]: 1.8 nM; DNA-PK [12]: 16 nM; MLCK: 170 nM; PI3K: 3 nM
<b>IUPAC Name</b>	[(1 <i>R</i> ,3 <i>R</i> ,5 <i>S</i> ,9 <i>R</i> ,18 <i>S</i> )-18-(methoxymethyl)-1,5-dimethyl-6,11,16-trioxo-13,17-dioxapentacyclo[10.6.1.0.2,10.05,9.015,19]nonadeca-2(10),12(19),14-trien-3-yl] acetate
<b>InChI</b>	InChI=1S/C23H24O8/c1-10(24)30-13-7-22(2)12(5-6-14(22)25)16-18(13)23(3)15(9-28-4)31-21(27)11-8-29-20(17(11)23)19(16)26/h8,12-13,15H,5-7,9H2,1-4H3/t12-,13+,15+,22-,23-/m0/s1
<b>InChI Key</b>	QDLHCMPXEPAAMD-QAIWCSMKSA-N
<b>Canonical SMILES</b>	CC(=O)OC1CC2(C(CCC2=O)C3=C1C4(C(OC(=O)C5=COC(=C54)C3=O)COC)C)C
<b>Isomeric SMILES</b>	CC(=O)O[C@@H]1C[C@]2([C@@H](CCC2=O)C3=C1[C@]4([C@H](OC(=O)C5=COC(=C54)C3=O)COC)C)C
<b>Form</b>	Lyophilized powder
<b>Purity</b>	≥98%
<b>Solubility</b>	DMSO: 73 mg/mL (170.38 mM); Water: Insoluble; Ethanol: Insoluble
<b>Identity</b>	Confirmed by NMR/HPLC/MS.
<b>Stability</b>	The product is stable for three years when stored at the recommended temperature in lyophilized powder.



**Applications**

Wortmannin is used to study the broad inhibition of PI3K signaling and its impact on cell growth, metabolism, and cancer.

---

**Storage**

Store at -20°C.

---