



Product Information

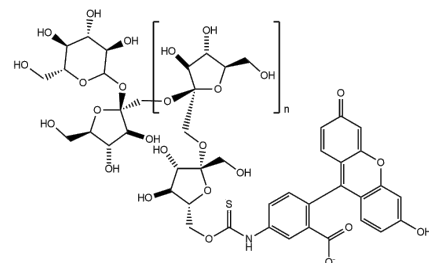
FITC-inulin, MW 3,000-6,000, DS 0.1-1.5%

Cat. No.: X24-05-XQ037

Size: 1 mg; 5 mg; 10 mg; 25 mg; 100 mg

Synonym: FITC-inulin 4.5; Inulin derivatives

This product is for research use only and is not intended for diagnostic use.



Product Information

Description	FITC-inulin is a fluorescein-labeled inulin fraction provided as a water-soluble yellow powder, where the fluorescein part is affixed by a steadfast thiocarbamoyl bond. It exhibits a maximum excitation of 490-495 nm and an emission peak of 520 ± 5 nm. FITC-inulin is a high-quality product with a molecular weight of 3,000-6,000 and a degree of substitution of 0.001-0.015.
Molecular Weight	3,000-6,000
Label	FITC
Degree of Substitution	0.1-1.5%
Form	Light yellow powder
Solubility	FITC-inulin dissolves readily in water.
Identity	Confirmed by NMR/HPLC/MS.
Applications	FITC-inulin with a molecular weight of 3,000-6,000 and DS of 0.001-0.015 can be used for the study of renal and gastrointestinal function in biological research as well as for exploring the movement of molecules in chemical processes.
Storage	FITC-inulin is stable for more than 6 years when stored dry in well-sealed containers at ambient temperature.