



Product Information

Microtubule/Tubulin inhibitor, D-64131, Purity $\geq 98\%$

Cat. No.: X24-08-YM235

Size: 10 mg; 25 mg; 50 mg; 100 mg

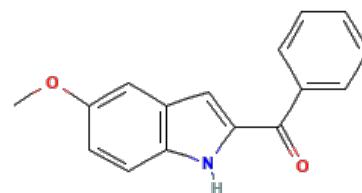
MDL: MFCD04039791

CAS Number: 74588-78-6

Compound CID: 3921152

Synonym: 74588-78-6; D 64131; D64131;

(5-Methoxy-1*H*-indol-2-yl)-phenylmethanone



This product is for research use only and is not intended for diagnostic use.

Product Information

Description	D-64131 is an effective cytoskeleton inhibitor, that has the ability to prevent the pathway of cytoskeletal signaling by inhibiting microtubule/tubulin.
Molecular Weight	251.28
Molecular Formula	C ₁₆ H ₁₃ NO ₂
IUPAC Name	(5-Methoxy-1 <i>H</i> -indol-2-yl)-phenylmethanone
InChI	InChI=1S/C16H13NO2/c1-19-13-7-8-14-12(9-13)10-15(17-14)16(18)11-5-3-2-4-6-11/h2-10,17H,1H3
InChI Key	ICMIJSRDISNKOC-UHFFFAOYSA-N
Canonical SMILES	<chem>COC1=CC2=C(C=C1)NC(=C2)C(=O)C3=CC=CC=C3</chem>
Form	Lyophilized powder
Purity	$\geq 98\%$
Titer	Free from inappropriate visible particulates, foreign matter, discoloration, or other defects
Stability	In its lyophilized form, the chemical remains stable for 36 months.
Quality Level	Research grade
Applications	D-64131 is a cytoskeletal signaling inhibitor that can be used for its ability to cause typical apoptotic nuclear blebbing and abnormal nuclear structures in many treated cells.
Storage	Store at -20°C, and keep desiccated.