



## Product Information

### Microtubule/Tubulin inhibitor, Crolibulin, Purity $\geq 98\%$

**Cat. No.:** X24-08-YM245

**Size:** 1 mg; 2 mg; 5 mg; 10 mg

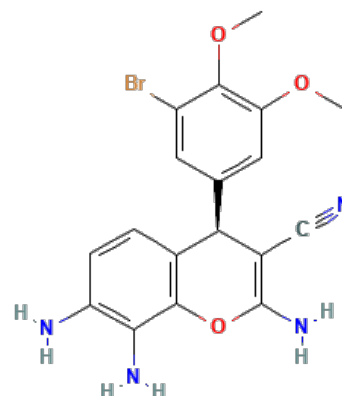
**CAS Number:** 1000852-17-4

**Compound CID:** 23649181

**Synonym:** 1000852-17-4; EPC2407; EPC 2407; EPC-2407; Crolibulin crinobulin;

(4*R*)-2,7,8-Triamino-4-(3-bromo-4,5-dimethoxyphenyl)-4*H*-chromene-3-carbonitrile

**This product is for research use only and is not intended for diagnostic use.**



#### Product Information

<b>Description</b>	Crolibulin is an effective cytoskeleton inhibitor, that has the ability to prevent the pathway of cytoskeletal signaling by inhibiting microtubule/tubulin.
<b>Molecular Weight</b>	417.26
<b>Molecular Formula</b>	C <sub>18</sub> H <sub>17</sub> BrN <sub>4</sub> O <sub>3</sub>
<b>IUPAC Name</b>	(4 <i>R</i> )-2,7,8-Triamino-4-(3-bromo-4,5-dimethoxyphenyl)-4 <i>H</i> -chromene-3-carbonitrile
<b>InChI</b>	InChI=1S/C18H17BrN4O3/c1-24-13-6-8(5-11(19)17(13)25-2)14-9-3-4-12(21)15(22)16(9)26-18(23)10(14)7-20/h3-6,14H,21-23H2,1-2H3/t14-/m1/s1
<b>InChI Key</b>	JXONINOYTKKXQQ-CQSZACIVSA-N
<b>Canonical SMILES</b>	<chem>COC1=C(C(=CC(=C1)C2C3=C(C(=C(C=C3)N)N)OC(=C2C#N)N)Br)OC</chem>
<b>Isomeric SMILES</b>	<chem>COC1=C(C(=CC(=C1)[C@@H]2C3=C(C(=C(C=C3)N)N)OC(=C2C#N)N)Br)OC</chem>
<b>Form</b>	Lyophilized powder
<b>Purity</b>	$\geq 98\%$
<b>Titer</b>	Free from inappropriate visible particulates, foreign matter, discoloration, or other defects
<b>Stability</b>	In its lyophilized form, the chemical remains stable for 36 months.
<b>Quality Level</b>	Research grade
<b>Applications</b>	Crolibulin is a cytoskeletal signaling inhibitor that can be studied extensively for its potential therapeutic applications in the treatment of various cancers by disrupting microtubule dynamics and inducing cell cycle arrest.
<b>Storage</b>	Store at -20°C, and keep desiccated.