

## Product Information

### Antifection inhibitor TBA-354, Purity $\geq 98\%$

**Cat. No.:** X24-07-ZQ014

**Size:** 5 mg; 10 mg; 25 mg; 50 mg

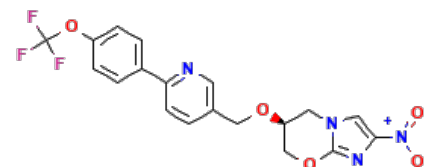
**MDL:** MFCD28009369

**CAS Number:** 1257426-19-9

**Compound CID:** 49836057

**Synonym:** 1257426-19-9; Antifection inhibitor; TBA 354; TBA354

**This product is for research use only and is not intended for diagnostic use.**



#### Product Information

|                          |  |
|--------------------------|--|
| <b>Description</b>       | TBA-354 has strong immunosuppressant properties.   |
| <b>Molecular Weight</b>  | 436.34   |
| <b>Molecular Formula</b> | C <sub>19</sub> H <sub>15</sub> F <sub>3</sub> N <sub>4</sub> O <sub>5</sub>   |
| <b>IUPAC Name</b>        | (6S)-2-nitro-6-[[6-[4-(trifluoromethoxy)phenyl]pyridin-3-yl]methoxy]-6,7-dihydro-5H-imidazo[2,1-b][1,3]oxazine   |
| <b>InChI</b>             | InChI=1S/C19H15F3N4O5/c20-19(21,22)31-14-4-2-13(3-5-14)16-6-1-12(7-23-16)10-29-15-8-25-9-17(26(27)28)24-18(25)30-11-15/h1-7,9,15H,8,10-11H2/t15-/m0/s1 |
| <b>InChI Key</b>         | ZXSGSFMORAILEY-HNNXBMFYSA-N  |
| <b>Canonical SMILES</b>  | C1C(COC2=NC(=CN21)[N+](=O)[O-])OCC3=CN=C(C=C3)C4=CC=C(C=C4)OC(F)(F)F   |
| <b>Isomeric SMILES</b>   | C1[C@@H](COC2=NC(=CN21)[N+](=O)[O-])OCC3=CN=C(C=C3)C4=CC=C(C=C4)OC(F)(F)F  |
| <b>Form</b>              | Lyophilized powder   |
| <b>Purity</b>            | $\geq 98\%$  |
| <b>Identity</b>          | Confirmed by NMR/HPLC/MS.  |
| <b>Stability</b>         | The product is stable for three years when stored at the recommended temperature in lyophilized powder.  |
| <b>Quality Level</b>     | Research grade   |
| <b>Applications</b>      | TBA-354 is assessed for its potential use in combating Mycobacterium tuberculosis, aiming to develop new therapeutic regimens for tuberculosis.        |
| <b>Storage</b>           | Store at -20°C, and keep desiccated.   |



CD BioGlyco

SUITE 201, 17 Ramsey Road, Shirley, NY 11967, USA

Tel: 1-631-637-6119 | Email: [info@bioglyco.com](mailto:info@bioglyco.com)

---