



Product Information

SGLT inhibitor LX2761, Purity $\geq 98\%$

Cat. No.: X24-07-ZQ605

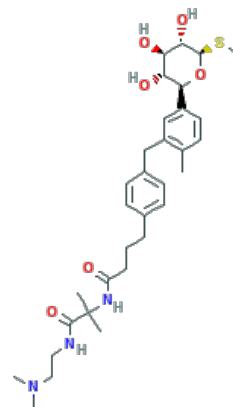
Size: 1 mg; 5 mg; 10 mg; 25 mg

CAS Number: 1610954-97-6

Compound CID: 76070894

Synonym: 1610954-97-6; SGLT inhibitor; LX-2761; LX2761

This product is for research use only and is not intended for diagnostic use.



Product Information

Description	LX2761 is a sodium-glucose cotransporter inhibitor, preventing the kidneys from reabsorbing glucose.
Molecular Weight	601.8
Molecular Formula	C ₃₂ H ₄₇ N ₃ O ₆ S
IUPAC Name	<i>N</i> -[2-(dimethylamino)ethyl]-2-methyl-2-[4-[4- [[2-methyl-5-[(2 <i>S</i> ,3 <i>R</i> ,4 <i>R</i> ,5 <i>S</i> ,6 <i>R</i>) -3,4,5-trihydroxy-6-methylsulfanyloxan-2-yl]]phenyl]methyl]phenyl]butanoylamino]propanamide
InChI	InChI=1S/C32H47N3O6S/c1-20-10-15-23(29-27(38)26(37)28(39)30(41-29)42-6)19-24(20)18-22-13-11-21(12-14-22)8-7-9-25(36)34-32(2,3)31(40)33-16-17-35(4)5/h10-15,19,26-30,37-39H,7-9,16-18H 2,1-6H3,(H,33,40)(H,34,36)/t26-,27-,28+,29+,30-/m1/s1
InChI Key	BNPZTRDIESRGTC-IXYVTWBDSA-N
Canonical SMILES	CC1=C(C=C(C=C1)C2C(C(C(C(O2)SC)O)O)O)CC3=CC=C(C=C3)CCCC(=O)NC(C)(C)C(=O)NCCN(C)C
Isomeric SMILES	CC1=C(C=C(C=C1)[C@H]2[C@@H]([C@H]([C@@H]([C@H](O2)SC)O)O)O)CC3=CC=C(C=C3)C CCC(=O)NC(C)(C)C(=O)NCCN(C)C
Form	Lyophilized powder
Purity	$\geq 98\%$
Identity	Confirmed by NMR/HPLC/MS.
Stability	The product is stable for three years when stored at the recommended temperature in lyophilized powder.



Quality Level	Research grade
Applications	LX2761, an SGLT inhibitor, is studied for its ability to modulate glucose reabsorption in the kidneys and its potential use in treating diabetes.
Storage	Store at -20°C, and keep desiccated.
