

Product Information

Serine protease inhibitor Sivelestat sodium hydrate, Purity $\geq 98\%$

Cat. No.: X24-07-ZQ847

Size: 10 mg; 50 mg; 100 mg; 200 mg

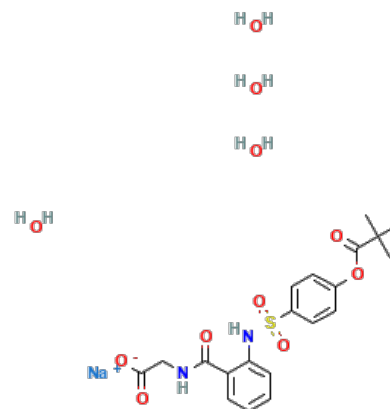
CAS Number: 201677-61-4

Compound CID: 23663985

Synonym: 201677-61-4; Serine protease inhibitor; ONO5046-Na; EI546 sodium;

LY544349 sodium

This product is for research use only and is not intended for diagnostic use.



Product Information

Description	Sivelestat sodium hydrate, soluble in DMSO and ethanol and insoluble in water, is a molecule that plays a crucial role in regulating various physiological processes by inhibiting the activity of serine proteases. It targets neutrophil elastase.
Molecular Weight	528.51
Molecular Formula	C ₂₀ H ₂₁ N ₂ O ₇ S.4H ₂ O.Na
Targets	Neutrophil elastase
IUPAC Name	Sodium;2-[[2-[[4-(2,2-dimethylpropanoyloxy)phenyl]sulfonylamino]benzoyl]amino]acetate;tetrahydrate
InChI	InChI=1S/C20H22N2O7S.Na.4H2O/c1-20(2,3)19(26)29-13-8-10-14(11-9-13)30(27,28)22-16-7-5-4-6-15(16)18(25)21-12-17(23)24;;;;;/h4-11,22H,12H2,1-3H3,(H,21,25)(H,23,24);;4*1H2/q;+1;;;;;/p-1
InChI Key	PLHREJBSQUSUCW-UHFFFAOYSA-M
Canonical SMILES	CC(C)(C)C(=O)OC1=CC=C(C=C1)S(=O)(=O)NC2=CC=CC=C2C(=O)NCC(=O)[O-].O.O.O.O.[Na+]
Form	Lyophilized powder
Purity	$\geq 98\%$
Solubility	DMSO: 91 mg/mL (172.18 mM); Water: Insoluble; Ethanol: 91 mg/mL (172.18 mM)
Identity	Confirmed by NMR/HPLC/MS.
Stability	The product is stable for three years when stored at the recommended temperature in lyophilized powder.
Quality Level	Research grade
Applications	Sivelestat sodium hydrate is used to inhibit serine proteases, primarily neutrophil elastase, which is involved in inflammatory responses and tissue damage.



Storage

Store at -20°C, and keep desiccated.
