



## Product Information

### Lipase inhibitor, XEN445, Purity ≥98%

**Cat. No.:** X24-09-YM394

**Size:** 2 mg; 5 mg; 10 mg; 20 mg

**MDL:** MFCD28166367

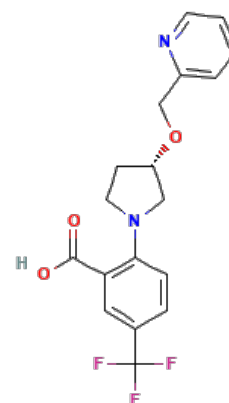
**CAS Number:** 1515856-92-4

**Compound CID:** 72736173

**Synonym:** 1515856-92-4; XEN-445; XEN 445;

2-[(3S)-3-(Pyridin-2-ylmethoxy)pyrrolidin-1-yl]-5-(trifluoromethyl)benzoic acid; Lipase inhibitor

**This product is for research use only and is not intended for diagnostic use.**



### Product Information

<b>Description</b>	XEN445, soluble in DMSO and ethanol and insoluble in water, is an effective metabolism inhibitor, that has the ability to prevent the pathway of cell metabolism by inhibiting lipase. The molecular weight of the compound is 366.33, and its molecular formula is C <sub>18</sub> H <sub>17</sub> F <sub>3</sub> N <sub>2</sub> O <sub>3</sub> .
<b>Molecular Weight</b>	366.33
<b>Molecular Formula</b>	C <sub>18</sub> H <sub>17</sub> F <sub>3</sub> N <sub>2</sub> O <sub>3</sub>
<b>IUPAC Name</b>	2-[(3S)-3-(Pyridin-2-ylmethoxy)pyrrolidin-1-yl]-5-(trifluoromethyl)benzoic acid
<b>InChI</b>	InChI=1S/C18H17F3N2O3/c19-18(20,21)12-4-5-16(15(9-12)17(24)25)23-8-6-14(10-23)26-11-13-3-1-2-7-22-13/h1-5,7,9,14H,6,8,10-11H2,(H,24,25)/t14-m/s1
<b>InChI Key</b>	NBGRERFNOKZQLO-AWEZLNQCLSA-N
<b>Canonical SMILES</b>	C1CN(CC1OCC2=CC=CC=N2)C3=C(C=C(C=C3)C(F)(F)F)C(=O)O
<b>Form</b>	Lyophilized powder
<b>Purity</b>	≥98%
<b>Impurities</b>	Free from inappropriate visible particulates, foreign matter, discoloration, or other defects.
<b>Solubility</b>	<i>In vitro</i> : DMSO: 79 mg/mL (215.65 mM); Water: insoluble; Ethanol (warmed): 34 mg/mL (92.81 mM)
<b>Identity</b>	Confirmed by NMR/HPLC/MS.
<b>Stability</b>	In its lyophilized form, the chemical remains stable for 36 months.
<b>Quality Level</b>	Research grade
<b>Applications</b>	XEN445 can be studied extensively for its potential therapeutic applications in the treatment of dyslipidemia and cardiovascular disease by influencing HDL levels.



## Storage

Store at -20°C, and keep desiccated.

---