

## Product Information

### Levosimendan, Purity $\geq 98\%$

**Cat. No.:** X24-09-YM1142

**Size:** 100 mg; 250 mg; 500 mg; 1000 mg

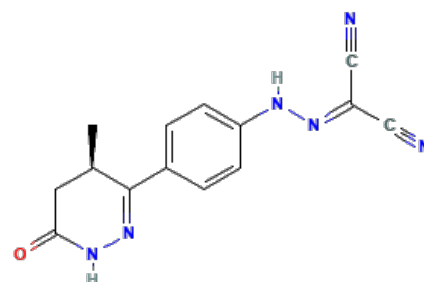
**MDL:** MFCD00867135

**CAS Number:** 141505-33-1

**Compound CID:** 3033825

**Synonym:** 141505-33-1; Simdax; (*R*)-Simendan; (-)-OR-1259; OR-1259; Simendan, (r)-;

2-[[4-[(4*R*)-4-Methyl-6-oxo-4,5-dihydro-1*H*-pyridazin-3-yl]phenyl]hydrazinylidene]propanedinitrile



**This product is for research use only and is not intended for diagnostic use.**

#### Product Information

<b>Description</b>	Levosimendan, soluble in DMSO and insoluble in water and ethanol, is a $\text{Ca}^{2+}$ sensitizer that increases the contractile force of the myocardium. The molecular weight of the compound is 280.29, and its molecular formula is $\text{C}_{14}\text{H}_{12}\text{N}_6\text{O}$ .
<b>Molecular Weight</b>	280.29
<b>Molecular Formula</b>	$\text{C}_{14}\text{H}_{12}\text{N}_6\text{O}$
<b>IUPAC Name</b>	2-[[4-[(4 <i>R</i> )-4-Methyl-6-oxo-4,5-dihydro-1 <i>H</i> -pyridazin-3-yl]phenyl]hydrazinylidene]propanedinitrile
<b>InChI</b>	InChI=1S/C14H12N6O/c1-9-6-13(21)19-20-14(9)10-2-4-11(5-3-10)17-18-12(7-15)8-16/h2-5,9,17H,6H2,1H3,(H,19,21)/t9-m/s1
<b>InChI Key</b>	WHXMKTBCFHIYNQ-SECBINFHSA-N
<b>Canonical SMILES</b>	<chem>CC1CC(=O)NN=C1C2=CC=C(C=C2)NN=C(C#N)C#N</chem>
<b>Form</b>	Lyophilized powder
<b>Purity</b>	$\geq 98\%$
<b>Impurities</b>	Free from inappropriate visible particulates, foreign matter, discoloration, or other defects.
<b>Solubility</b>	<i>In vitro</i> : DMSO: 48 mg/mL (171.26 mM); Water: insoluble; Ethanol: insoluble; <i>In vivo</i> : 5% DMSO + 40% PEG 300 + 5% Tween80 + 50% ddH <sub>2</sub> O, 4 mg/mL
<b>Identity</b>	Confirmed by NMR/HPLC/MS.
<b>Stability</b>	In its lyophilized form, the chemical remains stable for 36 months.
<b>Quality Level</b>	Research grade



**Applications**

Levosimendan plays a key role in increasing intracellular calcium levels, which reduces the risk of calcium overload.

---

**Storage**

Store at -20°C, and keep desiccated.

---