

## Product Information

### Tomeglovir, Purity ≥98%

**Cat. No.:** X24-09-YM1275

**Size:** 2 mg; 5 mg; 10 mg; 20 mg

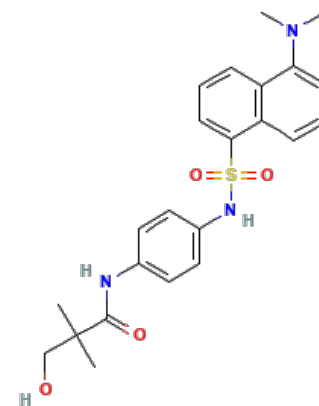
**MDL:** MFCD09837851

**CAS Number:** 233254-24-5

**Compound CID:** 475330

**Synonym:** 233254-24-5; BAY-38-4766; *N*

-[4-[[5-(Dimethylamino)naphthalen-1-yl]sulfonylamino]phenyl]-3-hydroxy-2,2-dimethylpropanamide



**This product is for research use only and is not intended for diagnostic use.**

### Product Information

<b>Description</b>	Tomeglovir is a novel nonnucleoside inhibitor of human cytomegalovirus replication. The molecular weight of the compound is 441.5432, and its molecular formula is C <sub>23</sub> H <sub>27</sub> N <sub>3</sub> O <sub>4</sub> S.
<b>Molecular Weight</b>	441.5432
<b>Molecular Formula</b>	C <sub>23</sub> H <sub>27</sub> N <sub>3</sub> O <sub>4</sub> S
<b>IUPAC Name</b>	<i>N</i> -[4-[[5-(Dimethylamino)naphthalen-1-yl]sulfonylamino]phenyl]-3-hydroxy-2,2-dimethylpropanamide
<b>InChI</b>	InChI=1S/C23H27N3O4S/c1-23(2,15-27)22(28)24-16-11-13-17(14-12-16)25-31(29,30)21-10-6-7-18-19(21)8-5-9-20(18)26(3)4/h5-14,25,27H,15H2,1-4H3,(H,24,28)
<b>InChI Key</b>	OSQAKHSYTKBSPB-UHFFFAOYSA-N
<b>Canonical SMILES</b>	CC(C)(CO)C(=O)NC1=CC=C(C=C1)NS(=O)(=O)C2=CC=CC3=C2C=CC=C3N(C)C
<b>Form</b>	Lyophilized powder
<b>Purity</b>	≥98%
<b>Impurities</b>	Free from inappropriate visible particulates, foreign matter, discoloration, or other defects.
<b>Identity</b>	Confirmed by NMR/HPLC/MS.
<b>Stability</b>	In its lyophilized form, the chemical remains stable for 36 months.
<b>Quality Level</b>	Research grade
<b>Applications</b>	Tomeglovir can be studied extensively for its potential therapeutic applications in the treatment of HCMV infections, particularly in immunocompromised patients (like organ transplant recipients), where the virus can cause severe complications.
<b>Storage</b>	Store at -20°C, and keep desiccated.



CD BioGlyco

SUITE 201, 17 Ramsey Road, Shirley, NY 11967, USA

Tel: 1-631-637-6119 | Email: [info@bioglyco.com](mailto:info@bioglyco.com)

---