

Product Information

Epithalon, Purity $\geq 98\%$

Cat. No.: X24-09-YM1299

Size: 5 mg; 10 mg; 25 mg; 50 mg

CAS Number: 307297-39-8

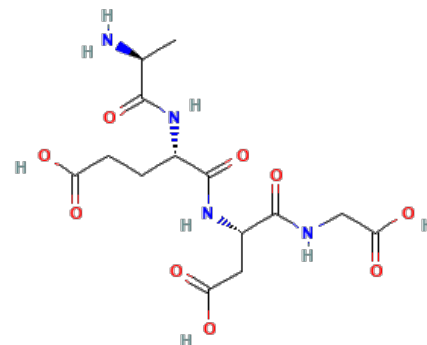
Compound CID: 219042

Synonym: 307297-39-8; Epithalon; Ala-Glu-Asp-Gly; Glycine, L-alanyl-L-alpha-glutamyl-L-alpha-aspartyl-;

(4S)-4-[[[(2S)-2-Aminopropanoyl]amino]-5-[[[(2S)

)-3-carboxy-1-(carboxymethylamino)-1-oxopropan-2-yl]amino]-5-oxopentanoic acid

This product is for research use only and is not intended for diagnostic use.



Product Information

Description	Epithalon is a synthetic tetra-peptide (Ala-Glu-Asp-Gly). The molecular weight of the compound is 390.35, and its molecular formula is C ₁₄ H ₂₂ N ₄ O ₉ .
Molecular Weight	390.35
Molecular Formula	C ₁₄ H ₂₂ N ₄ O ₉
IUPAC Name	(4S)-4-[[[(2S)-2-Aminopropanoyl]amino]-5-[[[(2S)-3-carboxy-1-(carboxymethylamino)-1-oxopropan-2-yl]amino]-5-oxopentanoic acid
InChI	InChI=1S/C14H22N4O9/c1-6(15)12(25)17-7(2-3-9(19)20)14(27)18-8(4-10(21)22)13(26)16-5-11(23)24/h6-8H,2-5,15H2,1H3,(H,16,26)(H,17,25)(H,18,27)(H,19,20)(H,21,22)(H,23,24)/t6-,7-,8-/m0/s1
InChI Key	HGHOBRRUMWJWCU-FXQIFTODSA-N
Canonical SMILES	CC(C(=O)NC(CCC(=O)O)C(=O)NC(CC(=O)O)C(=O)NCC(=O)O)N
Isomeric SMILES	CC[C@H](C)[C@@H](C(=O)N[C@@H](CC1=CN=CN1)C(=O)N2CCC[C@H]2C(=O)N[C@@H](CC3=CC=CC=C3)C(=O)O)NC(=O)[C@H](CC4=CC=C(C=C4)O)NC(=O)[C@H](C(C)C)NC(=O)[C@H](CCCN=C(N)N)NC(=O)[C@H](CC(=O)O)N.CC(=O)O
Form	Lyophilized powder
Purity	$\geq 98\%$
Impurities	Free from inappropriate visible particulates, foreign matter, discoloration, or other defects.
Identity	Confirmed by NMR/HPLC/MS.
Stability	In its lyophilized form, the chemical remains stable for 36 months.
Quality Level	Research grade



Applications

Epithalon can be used for its ability to modulate telomerase activity, potentially extending the lifespan of cells.

Storage

Store at -20°C, and keep desiccated.
