

Product Information

Sulopenem, Purity $\geq 98\%$

Cat. No.: X24-09-YM1452

Size: 25 mg; 50 mg; 100 mg; 200 mg

CAS Number: 120788-07-0

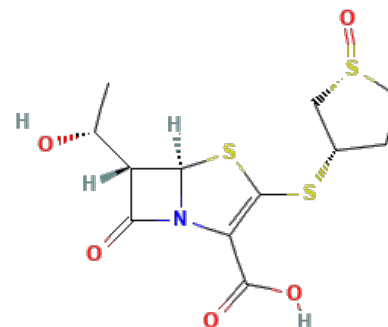
Compound CID: 9950244

Synonym: 120788-07-0; CP-70429;

(5*R*,6*S*)-6-[(1*R*)-1-Hydroxyethyl]-7-oxo-3-[(1*R*,3*S*

)-1-oxothiolan-3-yl]sulfanyl-4-thia-1-azabicyclo[3.2.0]hept-2-ene-2-carboxylic acid

This product is for research use only and is not intended for diagnostic use.



Product Information

Description	Sulopenem is an orally active, potent inhibitor of beta-lactamase. The molecular weight of the compound is 349.45, and its molecular formula is C ₂ H ₁₅ NO ₅ S ₃ .
Molecular Weight	349.45
Molecular Formula	C ₂ H ₁₅ NO ₅ S ₃
IUPAC Name	(5 <i>R</i> ,6 <i>S</i>)-6-[(1 <i>R</i>)-1-Hydroxyethyl]-7-oxo-3-[(1 <i>R</i> ,3 <i>S</i>)-1-oxothiolan-3-yl]sulfanyl-4-thia-1-azabicyclo[3.2.0]hept-2-ene-2-carboxylic acid
InChI	InChI=1S/C12H15NO5S3/c1-5(14)7-9(15)13-8(11(16)17)12(20-10(7)13)19-6-2-3-21(18)4-6/h5-7,10,14H,2-4H2,1H3,(H,16,17)/t5-,6+,7+,10-,21-/m1/s1
InChI Key	FLSUCZWOEMTFAQ-PRBGKLEPSA-N
Canonical SMILES	CC(C1C2N(C1=O)C(=C(S2)SC3CCS(=O)C3)C(=O)O)O
Form	Lyophilized powder
Purity	$\geq 98\%$
Impurities	Free from inappropriate visible particulates, foreign matter, discoloration, or other defects.
Identity	Confirmed by NMR/HPLC/MS.
Stability	In its lyophilized form, the chemical remains stable for 36 months.
Quality Level	Research grade
Applications	Sulopenem plays a key role in inhibiting their function during peptidoglycan synthesis, critical for bacterial cell wall integrity.
Storage	Store at -20°C, and keep desiccated.