

## Product Information

### 5-Bromo-6-chloro-3-indolyl palmitate

**Cat. No.:** X24-11-LY209

**Size:** 100 mg; 250 mg; 500 mg; 1 g; 2 g

**MDL:** MFCD00798391

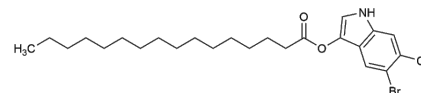
**CAS Number:** 209347-97-7

**Compound CID:** 24801980

**Synonym:** 209347-97-7; Magenta-Pal; 5-Bromo-6-chloro-3-indoxyl palmitate;

5-Bromo-6-chloro-1*H*-indol-3-yl palmitate; (5-Bromo-6-chloro-1*H*-indol-3-yl)

hexadecanoate



**This product is for research use only and is not intended for diagnostic use.**

#### Product Information

|                          |   |
|--------------------------|---|
| <b>Description</b>       | 5-Bromo-6-chloro-3-indolyl palmitate is a magenta substrate with specific biological activity and fluorescence features.          |
| <b>Molecular Weight</b>  | 484.9   |
| <b>Molecular Formula</b> | C <sub>24</sub> H <sub>35</sub> BrClNO <sub>2</sub>   |
| <b>IUPAC Name</b>        | (5-Bromo-6-chloro-1 <i>H</i> -indol-3-yl) hexadecanoate   |
| <b>InChI</b>             | InChI=1S/C24H35BrClNO2/c1-2-3-4-5-6-7-8-9-10-11-12-13-14-15-24(28)29-23-18-27-22-17-21(26)20(25)16-19(22)23/h16-18,27H,2-15H2,1H3 |
| <b>InChI Key</b>         | MGKOVBOTMHBOLI-UHFFFAOYSA-N   |
| <b>SMILES string</b>     | CCCCCCCCCCCCCCCC(=O)OC1=CNC2=CC(=C(C=C21)Br)Cl  |
| <b>Form</b>              | Powder  |
| <b>Purity</b>            | ≥95%  |
| <b>Applications</b>      | 5-Bromo-6-chloro-3-indolyl palmitate can be used to monitor the enzyme activity or the cell behavior.                             |
| <b>Storage</b>           | Store at -20°C.   |