



## Product Information

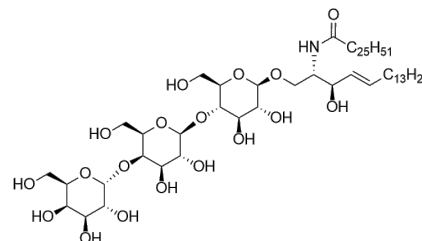
### Gb3Cer: Gal $\alpha$ (1-4)Gal $\beta$ (1-4)Glc-ceramide

**Cat. No.:** XGO0012Q

**Size:** 100 mg; 200 mg; 500 mg

**Synonym:** Gb3Cer; Gal $\alpha$ (1-4)Gal $\beta$ (1-4)Glc-Ceramide

**This product is for research use only and is not intended for diagnostic use.**



#### Product Information

<b>Molecular Weight</b>	1164.61
<b>Molecular Formula</b>	C <sub>62</sub> H <sub>117</sub> NO <sub>18</sub>
<b>Form</b>	Powder
<b>Applications</b>	Gb3Cer: Gal $\alpha$ (1-4)Gal $\beta$ (1-4)Glc-ceramide is a useful compound for research.
<b>Storage</b>	Store at -20°C.

#### Safety Information

<b>Personal Protective Equipment</b>	Gloves, eyeshields, N95 mask
--------------------------------------	------------------------------