

## Product Information

### Lactose-6'-phosphate

**Cat. No.:** X22-07-ZQ544

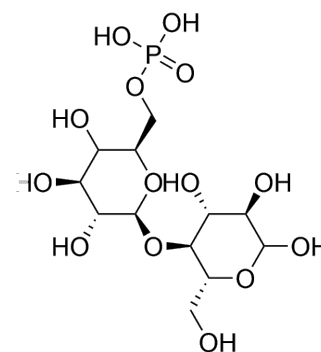
**Size:** 25 mg; 100 mg

**CAS Number:** 72929-47-6

**Compound CID:** 194479

**Synonym:** 72929-47-6;

[(2*R*,3*R*,4*S*,5*R*,6*S*)-3,4,5-Trihydroxy-6-[(2*R*,3*R*,4*R*,5*R*)-1,2,4,5-tetrahydroxy-6-oxohexan-3-yl]oxyoxan-2-yl]methyl dihydrogen phosphate



**This product is for research use only and is not intended for diagnostic use.**

### Product Information

<b>Molecular Weight</b>	422.28
<b>Molecular Formula</b>	C <sub>12</sub> H <sub>23</sub> O <sub>14</sub> P
<b>InChI</b>	InChI=1S/C12H23O14P/c13-1-4(15)7(17)11(5(16)2-14)26-12-10(20)9(19)8(18)6(25-12)3-24-27(21,22)23/h1,4-12,14-20H,2-3H2,(H2,21,22,23)/t4-,5+,6+,7+,8-,9-,10+,11+,12-/m0/s1
<b>InChI Key</b>	QMNITDNTKXPFOP-JVCRWLNRSA-N
<b>Canonical SMILES</b>	C(C1C(C(C(C(O1)OC(C(CO)O)C(C(C=O)O)O)O)O)OP(=O)(O)O
<b>Form</b>	Powder
<b>Purity</b>	>95%
<b>Applications</b>	Lactose-6'-phosphate is a useful chemical compound for research.
<b>Storage</b>	Store at -20°C.

### Safety Information

<b>Personal Protective Equipment</b>	Gloves, eyeshields, N95 mask
--------------------------------------	------------------------------