

Product Information

Sucrose-6'-phosphate

Cat. No.: X22-07-ZQ545

Size: 25 mg; 100 mg

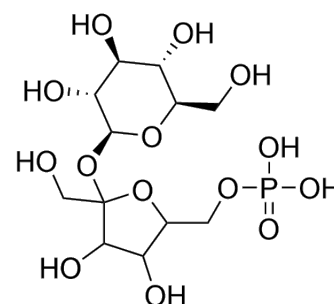
CAS Number: 4549-10-4

Compound CID: 439762

Synonym: 4549-10-4; Sucrose 6F-phosphate;

6-O-Phosphono-beta-D-fructofuranosyl alpha-D-glucopyranoside

This product is for research use only and is not intended for diagnostic use.



Product Information

| | |
|--------------------------|---|
| Molecular Weight | 422.28 |
| Molecular Formula | C ₁₂ H ₂₃ O ₁₄ P |
| InChI | InChI=1S/C12H23O14P/c13-1-4-6(15)8(17)9(18)11(24-4)26-12(3-14)10(19)7(16)5(25-12)2-23-27(20,21)22/h4-11,13-19H,1-3H2,(H2,20,21,22)/t4-,5-,6-,7-,8+,9-,10+,11-,12+/m1/s1 |
| InChI Key | PJTXXANTBQDXME-UGDNZRGBSA-N |
| Canonical SMILES | C(C1C(C(C(C(O1)OC2(C(C(C(O2)COP(=O)(O)O)O)CO)O)O)O)O |
| Form | Powder |
| Purity | >95% |
| Applications | Sucrose-6'-phosphate is a useful chemical compound for research. |
| Storage | Store at -20°C. |

Safety Information

| | |
|--------------------------------------|------------------------------|
| Personal Protective Equipment | Gloves, eyeshields, N95 mask |
|--------------------------------------|------------------------------|