

## Product Information

### L-Allose

**Cat. No.:** X22-11-ZQ236

**Size:** 500 mg; 1 g; 10 g

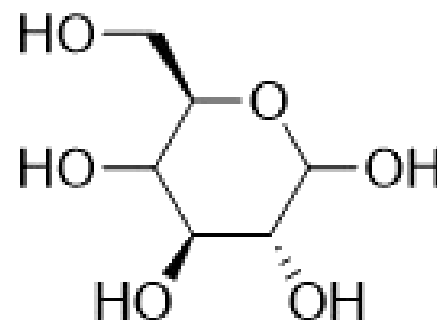
**CAS Number:** 2094973

**Compound CID:** 111317

**Synonym:** 7635-11-2; Aldehydo-L-allose;

(2S,3S,4S,5S)-2,3,4,5,6-Pentahydroxyhexanal; Aldehydo-L-allo-hexose

**This product is for research use only and is not intended for diagnostic use.**



### Product Information

<b>Molecular Weight</b>	180.16
<b>Molecular Formula</b>	C <sub>6</sub> H <sub>12</sub> O <sub>6</sub>
<b>InChI</b>	InChI=1S/C6H12O6/c7-1-3(9)5(11)6(12)4(10)2-8/h1,3-6,8-12H,2H2/t3-,4+,5-,6+/m1/s1
<b>InChI Key</b>	GZCGUPFRVQAUEE-MOJAZDJTSA-N
<b>Canonical SMILES</b>	C(C(C(C(C(=O)O)O)O)O)O
<b>Form</b>	Powder
<b>Applications</b>	L-Allose is a useful chemical compound for research and analytical purpose.
<b>Storage</b>	Store at -20°C.

### Safety Information

<b>Personal Protective Equipment</b>	Gloves, eyeshields, N95 mask
--------------------------------------	------------------------------