

Product Information

Bruceine E

Cat. No.: X22-05-ZQ598

Size: 5 mg; 10 mg; 20 mg

CAS Number: 21586-90-3

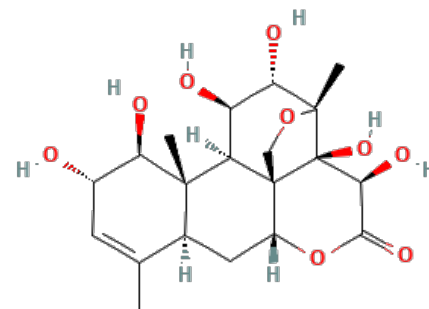
Compound CID: 5315510

Synonym: 21586-90-3; Bruceine E;

(1*R*,2*R*,3*R*,6*R*,8*S*,11*S*,12*S*,13*S*,14*R*,15*R*,16*S*,17*R*

)-2,3,11,12,15,16-Hexahydroxy-9,13,17-trimethyl-5,18-dioxapentacyclo[12.5.0.01,6.02

,17.08,13]nonadec-9-en-4-one



This product is for research use only and is not intended for diagnostic use.

Product Information

Description	Bruceine E is isolated from the seeds of <i>Brucea javanica</i> . It has been shown to have hypoglycemic effects <i>in vitro</i> . It induces the production of epidermal growth factor, which is involved in the regulation of glucose and insulin levels. This product can be used for research in the fields of medicine and pharmacy.
Molecular Weight	412.43
Molecular Formula	C ₂₀ H ₂₈ O ₉
IUPAC Name	(1 <i>R</i> ,2 <i>R</i> ,3 <i>R</i> ,6 <i>R</i> ,8 <i>S</i> ,11 <i>S</i> ,12 <i>S</i> ,13 <i>S</i> ,14 <i>R</i> ,15 <i>R</i> ,16 <i>S</i> ,17 <i>R</i>)-2,3,11,12,15,16-Hexahydroxy-9,13,17-trimethyl-5,18-dioxapentacyclo[12.5.0.01,6.02,17.08,13]nonadec-9-en-4-one
InChI	InChI=1S/C20H28O9/c1-7-4-9(21)13(23)17(2)8(7)5-10-19-6-28-18(3,14(24)11(22)12(17)19)20(19,27)15(25)16(26)29-10/h4,8-15,21-25,27H,5-6H2,1-3H3/t8-,9-,10+,11+,12+,13+,14-,15-,17-,18+,19+,20+/m0/s1
InChI Key	ZBXITHPYBBXZRG-QYUWQHSUSA-N
Canonical SMILES	CC1=CC(C(C2(C1CC3C45C2C(C(C4(C(C(=O)O3)O)O)(OC5)C)O)O)C)O)O
Isomeric SMILES	CC1=C[C@@H]([C@H]([C@]2([C@H]1C[C@@H]3[C@]45[C@@H]2[C@H]([C@@H]([C@]([C@@]4([C@H](C(=O)O3)O)O)(OC5)C)O)O)C)O)O
Source	<i>Brucea javanica</i>
Part Used	Seeds
Form	Powder
Purity	≥98%, determined by HPLC.



Identity	Confirmed by MS and NMR.
Stability	The product is stable for two years when stored at the recommended temperature.
Applications	Bruceine E can be used for research in the fields of medicine and pharmacy.
Storage	Store at 4°C. Protect from light.

Safety Information

Personal Protective Equipment	Gloves, eyeshields, N95 mask
--------------------------------------	------------------------------
