

## Product Information

### Parthenolide

**Cat. No.:** X23-04-XQ295

**Size:** 20 mg; 50 mg; 100 mg; 200 mg

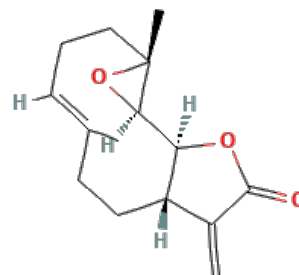
**MDL:** MFCD00134592

**CAS Number:** 20554-84-1

**Compound CID:** 7251185

**Synonym:** 20554-84-1; Parthenolide; (-)-Parthenolide; (-)-Parthenolide

**This product is for research use only and is not intended for diagnostic use.**



### Product Information

<b>Description</b>	Parthenolide is a sesquiterpene lactone that is widely used as an herbal remedy for arthritis and migraine.
<b>Molecular Weight</b>	248.32
<b>Molecular Formula</b>	C <sub>15</sub> H <sub>20</sub> O <sub>3</sub>
<b>IUPAC Name</b>	(1S,2R,4R,7E,11S)-4,8-Dimethyl-12-methylidene-3,14-dioxatricyclo[9.3.0.0 <sup>2,4</sup> ]tetradec-7-en-13-one
<b>InChI</b>	InChI=1S/C15H20O3/c1-9-5-4-8-15(3)13(18-15)12-11(7-6-9)10(2)14(16)17-12/h5,11-13H,2,4,6-8H2,1,3H3/b9-5+/t11-,12-,13+,15+/m0/s1
<b>InChI Key</b>	KTEXNACQROZXEV-PVLRGYAZSA-N
<b>Canonical SMILES</b>	CC1=CCCC2(C(O <sub>2</sub> )C3C(CC1)C(=C)C(=O)O <sub>3</sub> )C
<b>Isomeric SMILES</b>	C/C/1=C\CC[C@@]2([C@H](O <sub>2</sub> )[C@@H]3[C@@H](CC1)C(=C)C(=O)O <sub>3</sub> )C
<b>Source</b>	<i>Tsoongiodendronodorum</i> Chun
<b>Form</b>	Brown yellow powder
<b>Purity</b>	>98%, determined by HPLC.
<b>Solubility</b>	It is soluble in acetone, ethyl acetate, DMSO and other organic solvents, but insoluble in water.
<b>Identity</b>	Confirmed by NMR and MS.
<b>Stability</b>	The product is stable for two years when stored at the recommended temperature.
<b>Melting Point</b>	115 °C
<b>Applications</b>	Parthenolide can be used for inhibiting tumor cell proliferation experiments, <i>etc.</i>
<b>Storage</b>	Store at 4°C. Protect from light.



## Safety Information

**Personal Protective Equipment**      Gloves, eyeshields, N95 mask

---