

Product Information

Paclitaxel

Cat. No.: X23-04-XQ457

Size: 20 mg; 50 mg; 100 mg; 200 mg

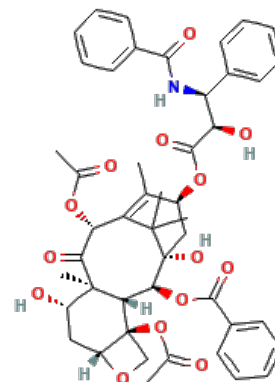
MDL: MFCD00869953

CAS Number: 33069-62-4

Compound CID: 36314

Synonym: 33069-62-4; Paclitaxel; Taxol; Plaxicel; Genaxol; Ebetaxel; Genetaxyl; Capxol; Paxene; Onxol; OncoGel; Cyclopax; Genexol; Intaxel; Mitotax; Pacliex; Paxceed; TaxAlbin; Anzatax; Infinnium; Nanotaxel; Paical; Pacligel; Paxoral

This product is for research use only and is not intended for diagnostic use.



Product Information

Description	Paclitaxel is classified as a "plant alkaloid", a "taxane" and an "antimicrotubule agent".
Molecular Weight	853.92
Molecular Formula	C ₄₇ H ₅₁ NO ₁₄
IUPAC Name	[(1S,2S,3R,4S,7R,9S,10S,12R,15S)-4,12-Diacetyloxy-15-[(2R,3S)-3-benzamido-2-hydroxy-3-phenylpropanoyl]oxy-1,9-dihydroxy-10,14,17,17-tetramethyl-11-oxo-6-oxatetracyclo[11.3.1.0.3,10.0.4,7]heptadec-13-en-2-yl] benzoate
InChI	InChI=1S/C47H51NO14/c1-25-31(60-43(56)36(52)35(28-16-10-7-11-17-28)48-41(54)29-18-12-8-13-19-29)23-47(57)40(61-42(55)30-20-14-9-15-21-30)38-45(6,32(51)22-33-46(38,24-58-33)62-27(3)50)39(53)37(59-26(2)49)34(25)44(47,4)5/h7-21,31-33,35-38,40,51-52,57H,22-24H2,1-6H3,(H,48,54)/t31-,32-,33+,35-,36+,37+,38-,40-,45+,46-,47+/m0/s1
InChI Key	RCINICONZNJXQF-MZXODVADSA-N
Canonical SMILES	CC1=C2C(C(=O)C3(C(CC4C(C3C(C(C2(C)C)(CC1OC(=O)C(C(C5=CC=CC=C5)NC(=O)C6=CC=C(C=C6)O)O)OC(=O)C7=CC=CC=C7)(CO4)OC(=O)C)O)C)OC(=O)C
Isomeric SMILES	CC1=C2[C@H](C(=O)[C@@]3([C@H](C[C@@H]4[C@]([C@H]3[C@@H]([C@@](C2(C)C)(C[C@@H]1OC(=O)[C@@H]([C@H](C5=CC=CC=C5)NC(=O)C6=CC=CC=C6)O)O)OC(=O)C7=CC=CC=C7)(CO4)OC(=O)C)O)C)OC(=O)C
Source	The dried roots, branches, and bark of the <i>Taxaceae</i>
Form	White crystalline powder
Purity	>98%, determined by HPLC.
Solubility	It is insoluble in water and easily soluble in organic solvents such as chloroform and acetone.



Identity	Confirmed by NMR and MS.
Stability	The product is stable for two years when stored at the recommended temperature.
Melting Point	213-216°C
Applications	Paclitaxel can be used for slowing or stopping cancer cell growth experiments, <i>etc.</i>
Storage	Store at 4°C. Protect from light.

Safety Information

Personal Protective Equipment	Gloves, eyeshields, N95 mask
--------------------------------------	------------------------------
